

Air Quality Fact Sheet

Particle Pollution - Sources

QA How much particle pollution can be attributed to local sources?

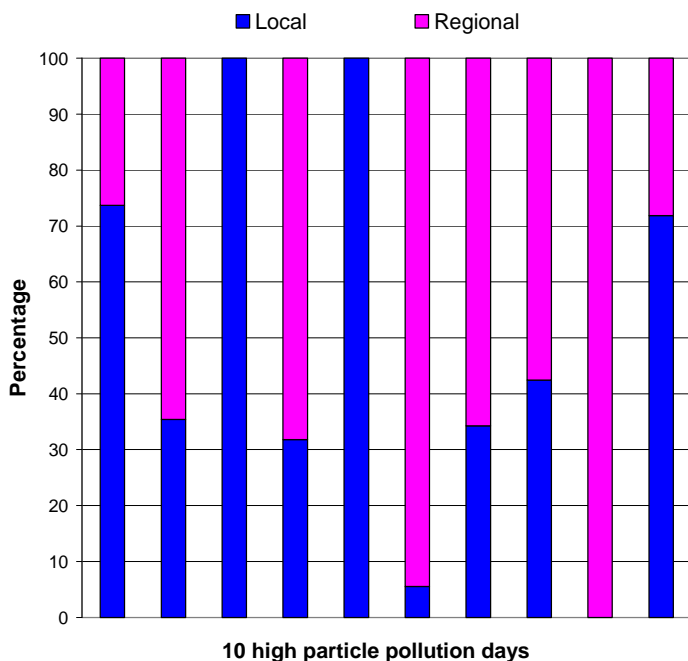
In the winter, on average, 50% of the particle pollution is produced in the Youngstown area. In the summer, on average, 65% of the particle pollution is locally produced.

i Other information:

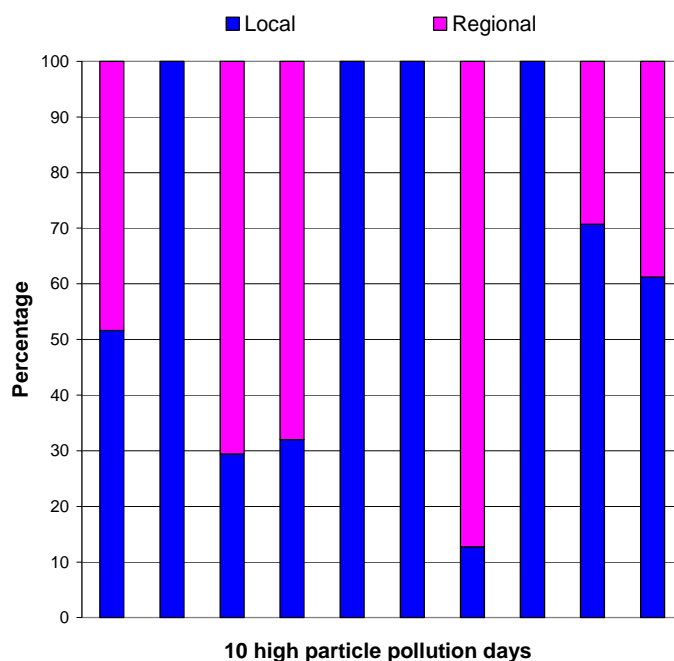
Analysis of 20 days shows that local contributions to particle pollution levels can range from a few percent to 100% in the winter and from 10% to 100% in the summer.

In addition to the fresh, local, same-day emissions, carryover (local particles from previous days that don't leave the area) can be a large contributor to daily particle pollution levels.

Winter Sources of Particle Pollution



Summer Sources of Particle Pollution



Contact Information:

Lisa Pompeo
5121 Mahoning Ave.
Youngstown, OH 44515
(330) 779-3800
lpompeo@eastgatecog.org
www.MahoningValleyAir.org

Footnotes:

Statistics are based on 10 high winter particle pollution days and 10 high summer particle pollution days from 2001-2004.

Winter = Nov-Feb; Summer = Jun-Sep

Regional = Transported particle pollution

Local = Particle pollution from local sources including carryover pollution from prior days